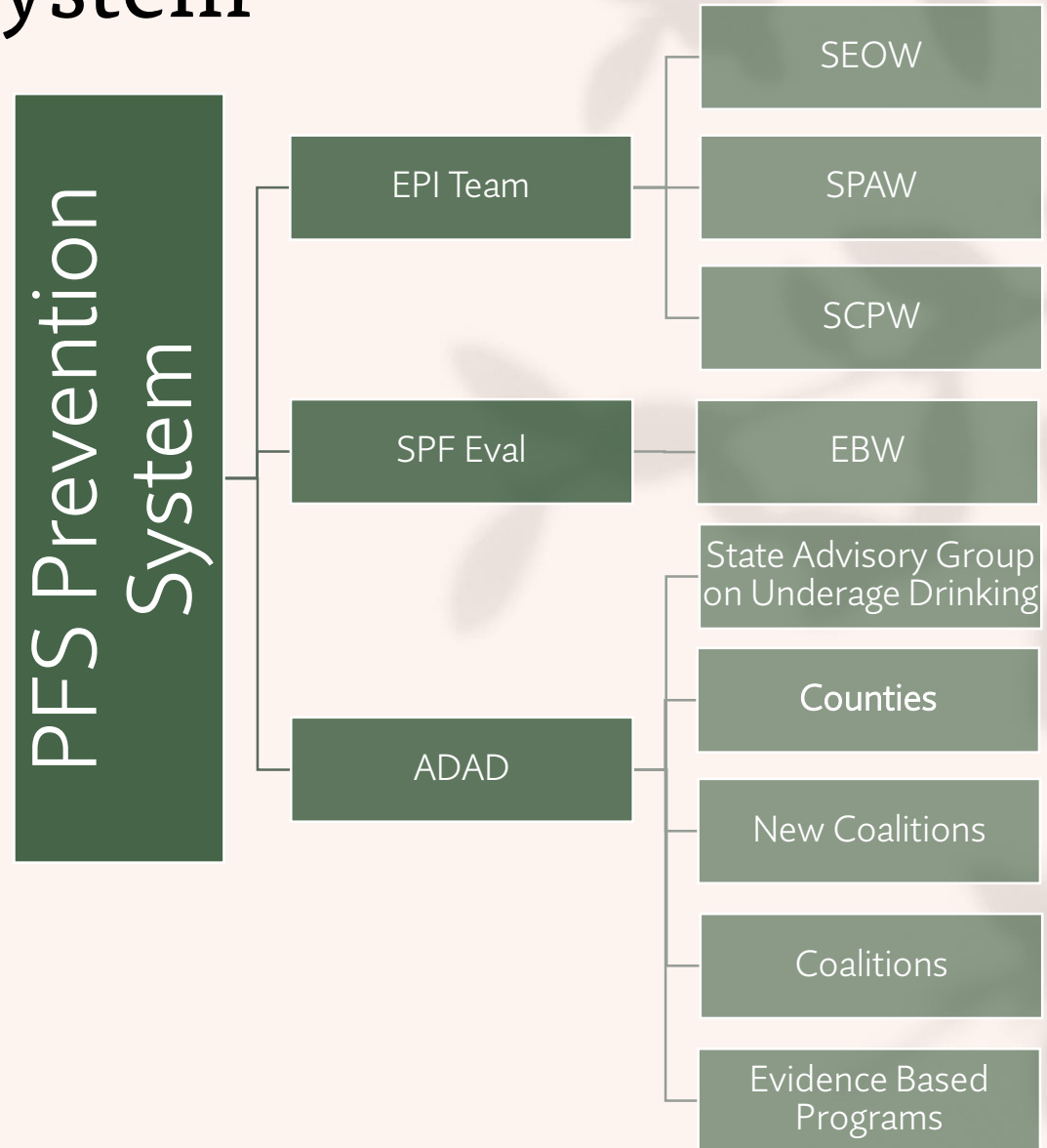


Strategic Prevention Framework – Partnerships For Success

PFS Prevention System





SAMHSA SPF-PFS Description

The Substance Abuse and Mental Health Services Administration (SAMHSA) Center for Substance Abuse Prevention (CSAP) Strategic Prevention Framework - Partnerships for Success grants. The purpose of this grant program is to prevent the onset and reduce the progression of substance abuse and its related problems while strengthening prevention capacity and infrastructure at the community and state level. The program is intended to address one of the nation's top substance abuse prevention priorities. Recipients will identify the primary problematic substances in their jurisdictions and develop and implement strategies to prevent the misuse of these substances among youth and adults.

Hawaii SPF-PFS Purpose

The purpose of Hawaii's Strategic Prevention Framework Partnerships for Success Project (HI-SPF-PFS) is to strengthen and enhance Hawaii's prevention system to promote well-being and reduce the impact of underage drinking (UAD) among persons aged 9 to 20 in Hawaii's communities. The project plans to align prevention priorities and the implementation of the Strategic Prevention Framework (SPF) process to ensure effective prevention strategies and sustainable infrastructures.

The HI-SPF-PFS will build and strengthen collaboration among state agencies, stakeholders, and communities statewide concerning substance misuse and its associated consequences. By the end of the five-year grant period, a comprehensive, organized, effective, and data-driven prevention system should be in place.

Provider Breakdown (until 9/29/2022)



Counties

City & County of Honolulu

County of Hawai'i

County of Kauai

County of Maui



Coalitions

HPPUD

Community Works in96744 (Oahu)

Maui Coalition for Drug-Free Youth (MCDFY)

Hawaii Alliance for Drug-Free Communities
(HADFC) *New

East Hawaii Drug Free Coalition *New



Evidence Based Programs

Maui Youth & Family Services

Boys & Girls Club of Big Island

Maui Family Support Services

STRATEGIC PREVENTION FRAMEWORK (SPF)



Assessment- Identify local prevention needs, resources, and readiness to address needs and gaps

Capacity- Mobilize and/or build capacity to address needs

Planning- Develop a Comprehensive Strategic Plan

Implementation- Implement the Strategic Plan and corresponding evidence-based prevention strategies

Evaluation- Examine the process and outcomes of programs and practices

Sustainability and Cultural Competence- Understand and interact effectively with people of different values, etc. Build an adaptive and effective system that achieves desired long-term effects



Thank you

Tehani Diaz

Tehani.Diaz@doh.hawaii.gov